

## PS3Break Firmware Uploader Instructions

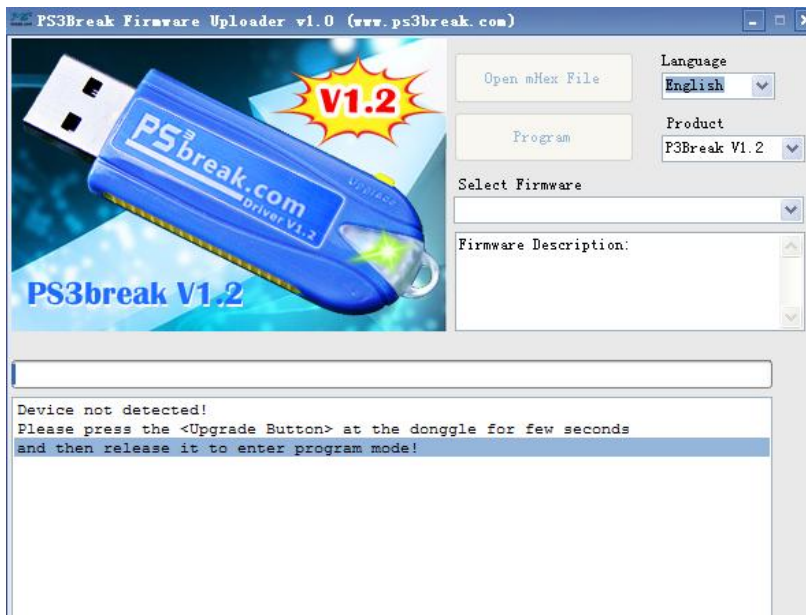
1、 The new burning program is just the same as the old version, **PS3break Burner Tool** (the application program environment bundles) must be downloaded and installed before running. If you have ever installed it before, you may download the new burning program directly without reinstallation. They are listed on the download page of our website with all the links those to be downloaded.



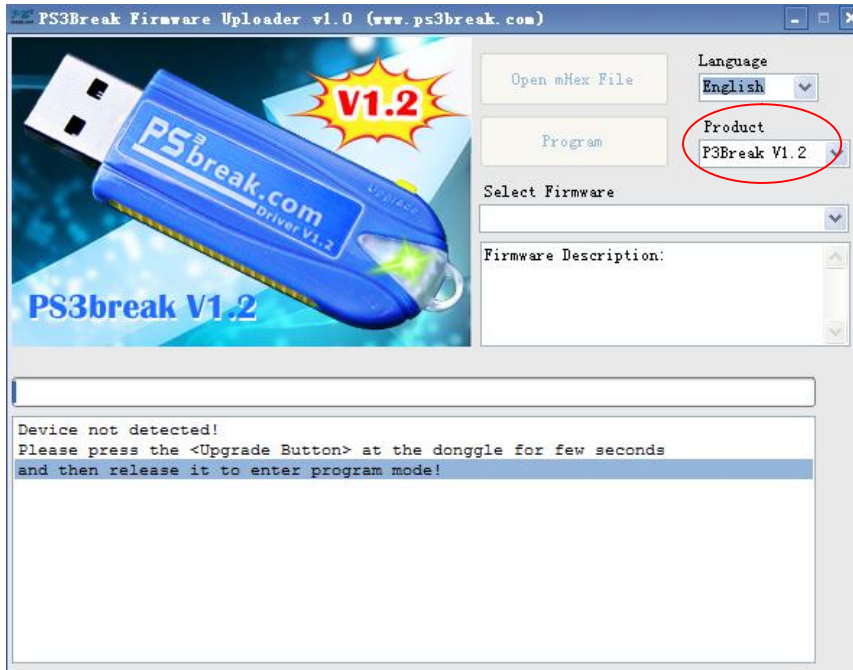
2、 Download the new burning program PS3Break Firmware Uploader V1.0



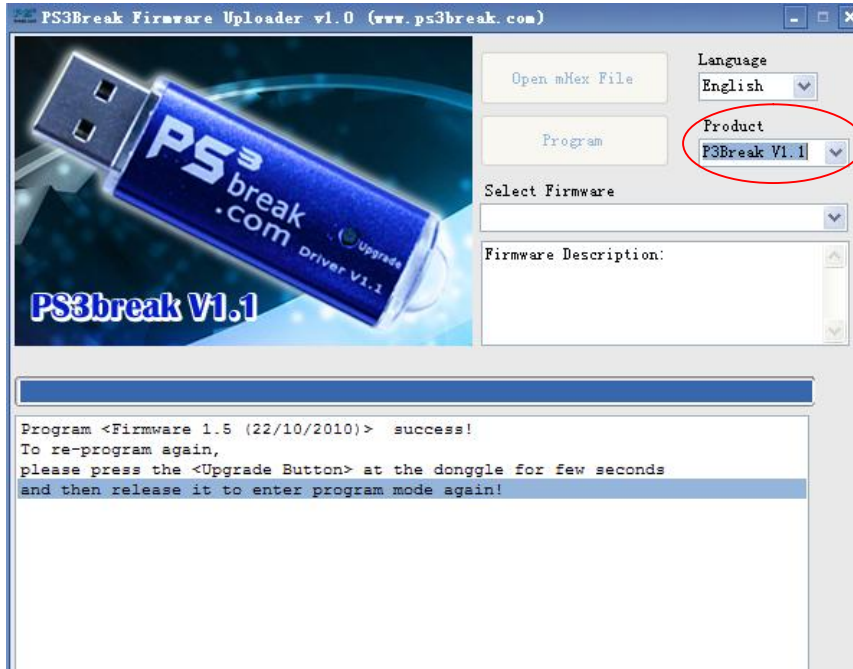
3、 Run PS3Break Loader.exe



4、 Select the corresponding version in the following menu.



V1.2 Menu



V1.1 Menu

5、 Plug in the PS3 dongle, press Upgrade button for seconds and release, the program is automatically being tested, and related information will be displayed as below.

```
Device attached.  
PS3Break USB dongle found!  
Select the correspond mHEX file.
```

6、 Select the corresponding mHex.file

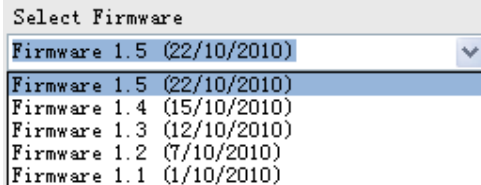


Open mHex File

7、 The file was installed successfully, related information will be displayed as below

```
Device attached.  
PS3Break USB dongle found!  
Select the correspond mHEX file.  
Loading <Firmware 1.5 (22/10/2010)> success.  
Ready to program the device.
```

8、 Users can choose their needed version from the following list.



Select Firmware

|                           |   |
|---------------------------|---|
| Firmware 1.5 (22/10/2010) | ▼ |
| Firmware 1.5 (22/10/2010) |   |
| Firmware 1.4 (15/10/2010) |   |
| Firmware 1.3 (12/10/2010) |   |
| Firmware 1.2 (7/10/2010)  |   |
| Firmware 1.1 (1/10/2010)  |   |

9、 Press “Program” and it starts burning,



Program

10、 Burning is completed after a few seconds, related information will be displayed as below.

```
Program <Firmware 1.5 (22/10/2010)> success!  
To re-program again,  
please press the <Upgrade Button> at the donggle for few seconds  
and then release it to enter program mode again!
```